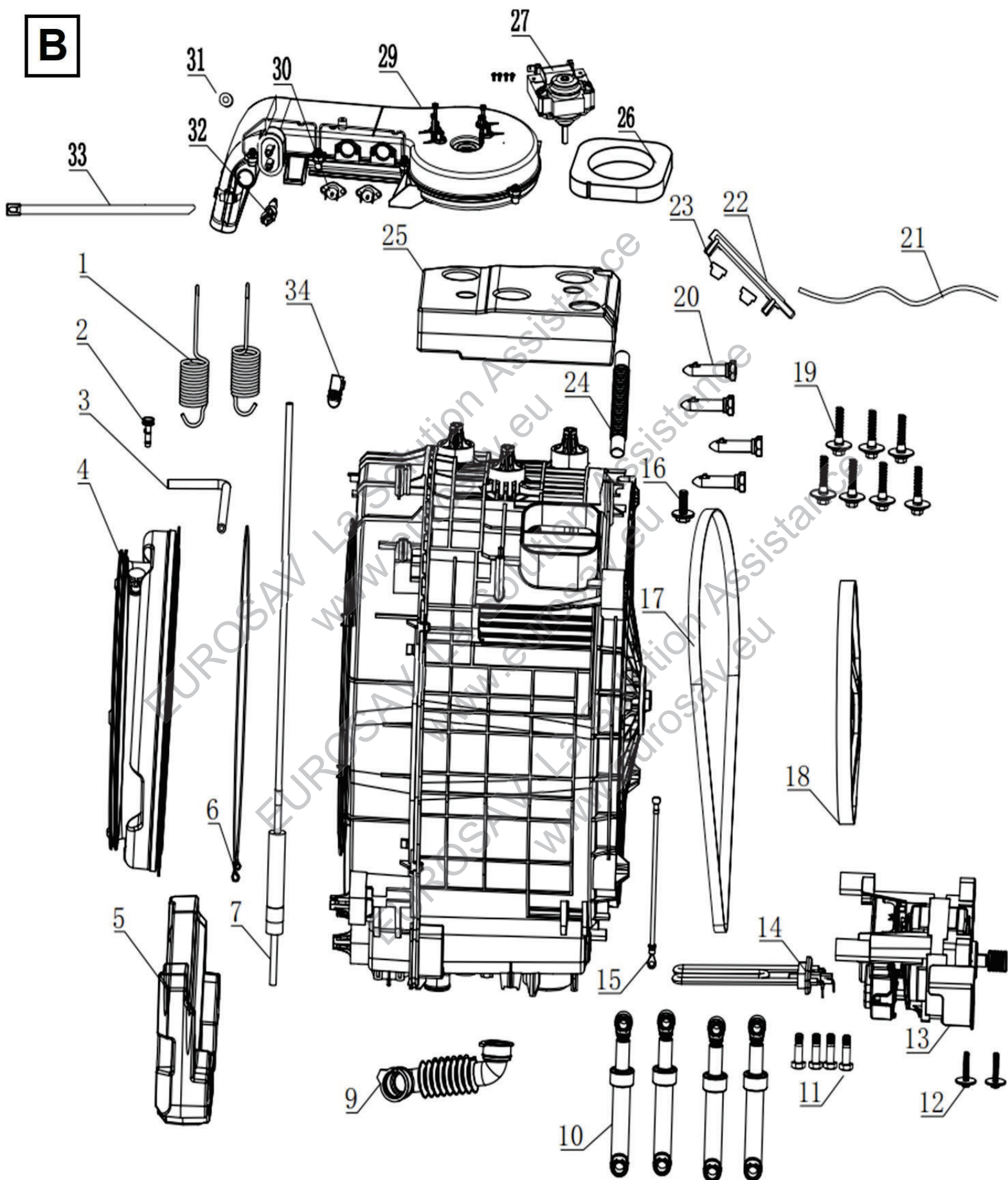


**A**

This diagram illustrates the exploded view of a washing machine door assembly. The central component is the door panel (1), which is shown with its internal structure and various mounting points. Surrounding the door panel are numerous smaller components, including:
 

- 1: Door panel
- 2: Door gasket
- 3: Door lock
- 4: Door handle
- 5: Door hinge
- 6: Door latch
- 7: Door seal
- 8: Door frame
- 9: Door trim
- 10: Door latch
- 11: Door handle
- 12: Door lock
- 13: Door hinge
- 14: Door latch
- 15: Door seal
- 16: Door frame
- 17: Door trim
- 18: Door latch
- 19: Door handle
- 20: Door lock
- 21: Door hinge
- 22: Door latch
- 23: Door seal
- 24: Door frame
- 25: Door trim
- 26: Door latch
- 27: Door handle
- 28: Door lock
- 29: Door hinge
- 30: Door latch
- 31: Door seal
- 32: Door frame
- 33: Door trim
- 34: Door latch
- 35: Door handle

**B**





**C**

