



La solution assistance

# ERROR CODE



La solution assistance



**Français**

**Page de**

**2**

**à**

**3**



**English**

**Page**

**4**

**to**

**5**



**Español**

**página**

**6**

**a**

**7**



**Português**

**página**

**8**

**a**

**9**



**Polski**

**strona**

**10**

**do**

**11**



**Magyar**

**oldal**

**12**

**és**

**13**



**Română**

**pagina**

**14**

**și**

**15**



**Deutsch**

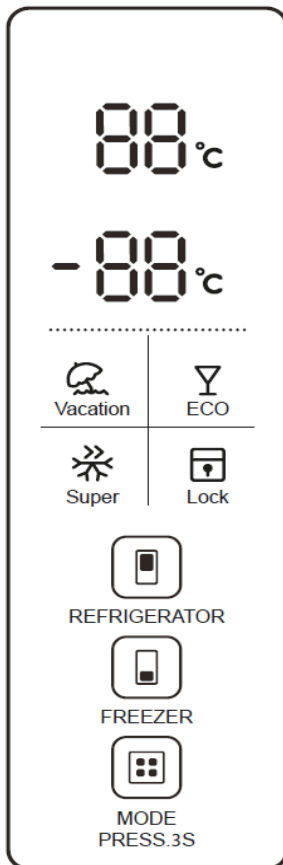
**Seite von**

**16**

**und**

**17**

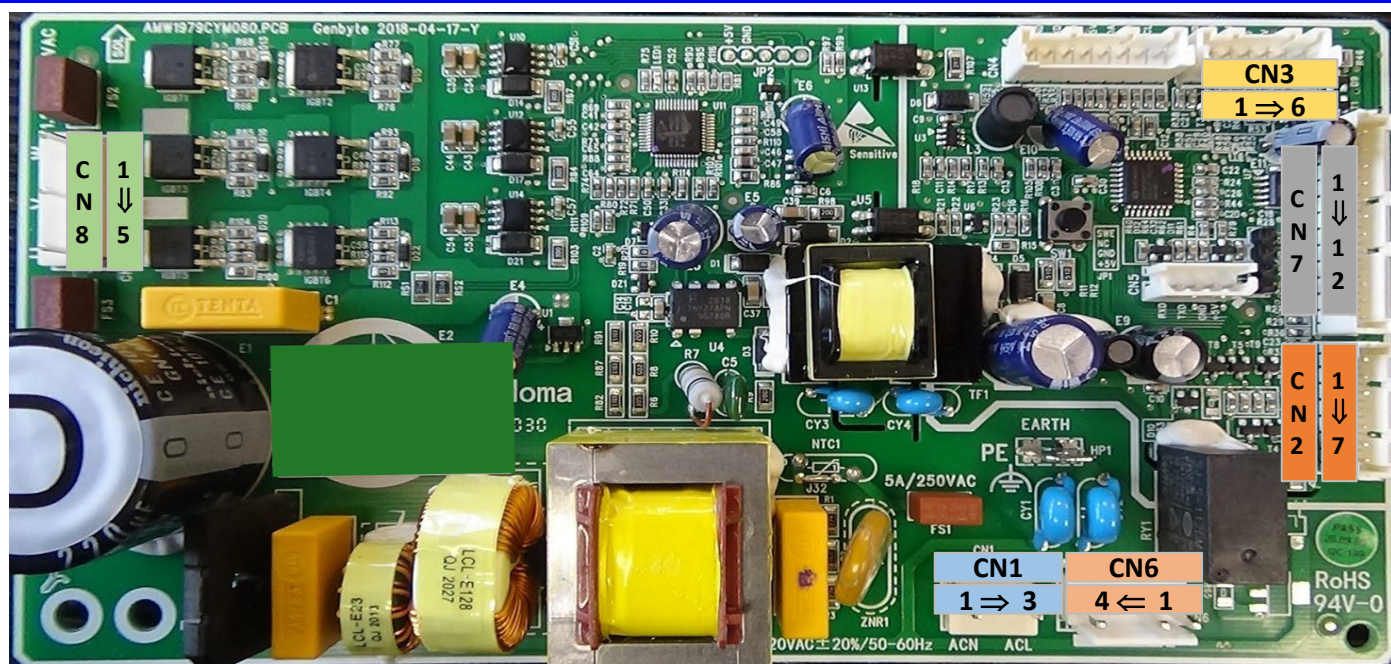
*La solution assistance*



Codes Erreur	Description
E0	Problème communication entre afficheur / puissance
E1	Défaut sonde réfrigérateur
E2	Défaut sonde congélateur
E3	Défaut sonde dégivrage
E4	Défaut sonde ambiant (Sur afficheur)
E5	Défaut résistance de dégivrage ou fusibles

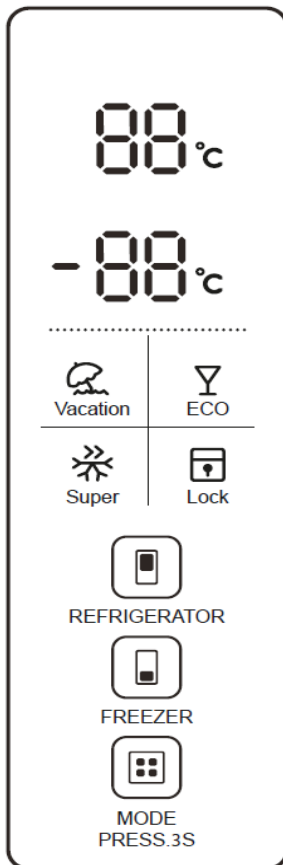
Valeurs sonde de températures							
T( )	R(kΩ)	T( )	R(kΩ)	T( )	R(kΩ)	T( )	R(kΩ)
-30	33.81	-18	16.90	2	5.87	8	4.37
-28	30.01	-16	15.15	3	5.59	10	3.97
-26	26.68	-10	10.92	4	5.32	15	3.14
-24	23.75	-5	8.39	5	5.06	20	2.50
-22	21.18	0	6.50	6	4.82	25	2.01
-20	18.90	1	6.18	7	4.59	30	1.62

*La solution assistance*



CN8	1	W	Compresseur	CN7	1	+12V	-
	2	-	-		2	B-	-
	3	V	Compresseur		3	A-	Clapet
	4	-	-		4	B+	-
	5	U	Compresseur		5	A+	-
CN3	1	GND	Interrupteur de porte congélateur		6	GND	Interrupteur de porte réfrigérateur
	2	Door2			7	Door1	
	3	COMU	Afficheur + Sonde ambient		8	+12V	Éclairage réfrigérateur
	4	GND			9	Lci.led	
	5	+5V			Sonde réfrigérateur	10	GND
	6	+12V				11	LCTH
CN2	1	LDTH	Sonde congélateur		12	-	-
	2	GND	Sonde dégivrage	CN6	1	SL-H	-
	3	HSTH			2	FD-H	Résistance dégivrage
	4	GND	3		-	-	
	5	PWM	Ventilateur		4	ACN	Neutre
	6	FAN		CN1	1	ACN	Alimentation
	7	GND			2	-	
		3	ACL				

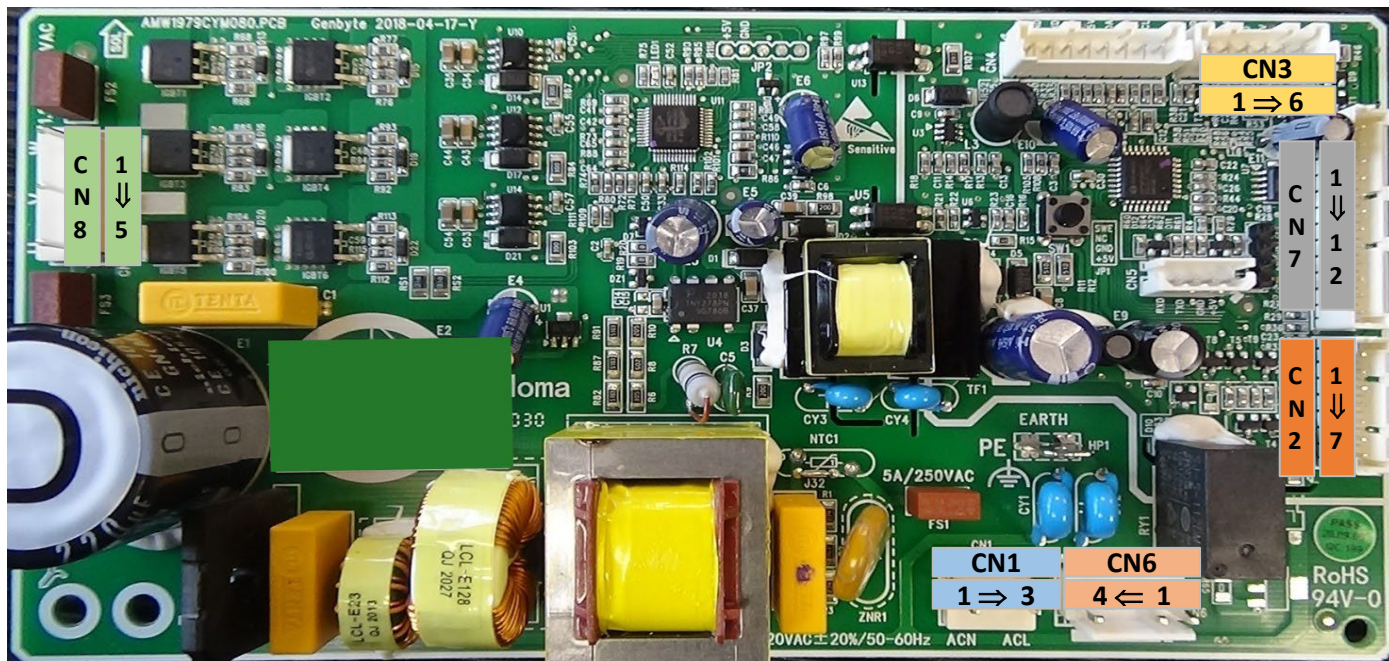
*La solution assistance*



Error Codes	Description
E0	Communication problem between display / power
E1	Refrigerator sensor fault
E2	Freezer sensor fault
E3	Defrost sensor fault
E4	Room sensor fault (On display)
E5	Defrost heater or fuse fault

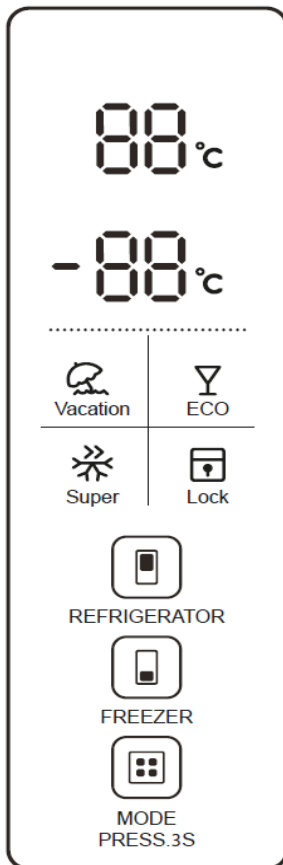
Temperature probe values							
T( )	R(kΩ)	T( )	R(kΩ)	T( )	R(kΩ)	T( )	R(kΩ)
-30	33.81	-18	16.90	2	5.87	8	4.37
-28	30.01	-16	15.15	3	5.59	10	3.97
-26	26.68	-10	10.92	4	5.32	15	3.14
-24	23.75	-5	8.39	5	5.06	20	2.50
-22	21.18	0	6.50	6	4.82	25	2.01
-20	18.90	1	6.18	7	4.59	30	1.62

*La solution assistance*



CN8	1	W	Compressor	CN7	1	+12V	-
	2	-	-		2	B-	-
	3	V	Compressor		3	A-	valve
	4	-	-		4	B+	-
	5	U	Compressor		5	A+	-
CN3	1	GND	freezer door switch		6	GND	refrigerator door switch
	2	Door2	-		7	Door1	-
	3	COMU	-		8	+12V	Refrigerator lighting
	4	GND	Display + Ambient sensor		9	Lci.led	-
	5	+5V	-		10	GND	Fridge probe
	6	+12V	-		11	LCTH	-
CN2	1	LDTH	Freezer probe		12	-	-
	2	GND	-	CN6	1	SL-H	-
	3	HSTH	Defrost probe		2	FD-H	Defrost resistance
	4	GND	-		3	-	-
	5	PWM	-		4	ACN	Neutral
	6	FAN	Fan	CN1	1	ACN	-
	7	GND	-		2	-	Feed
			3		ACL	-	

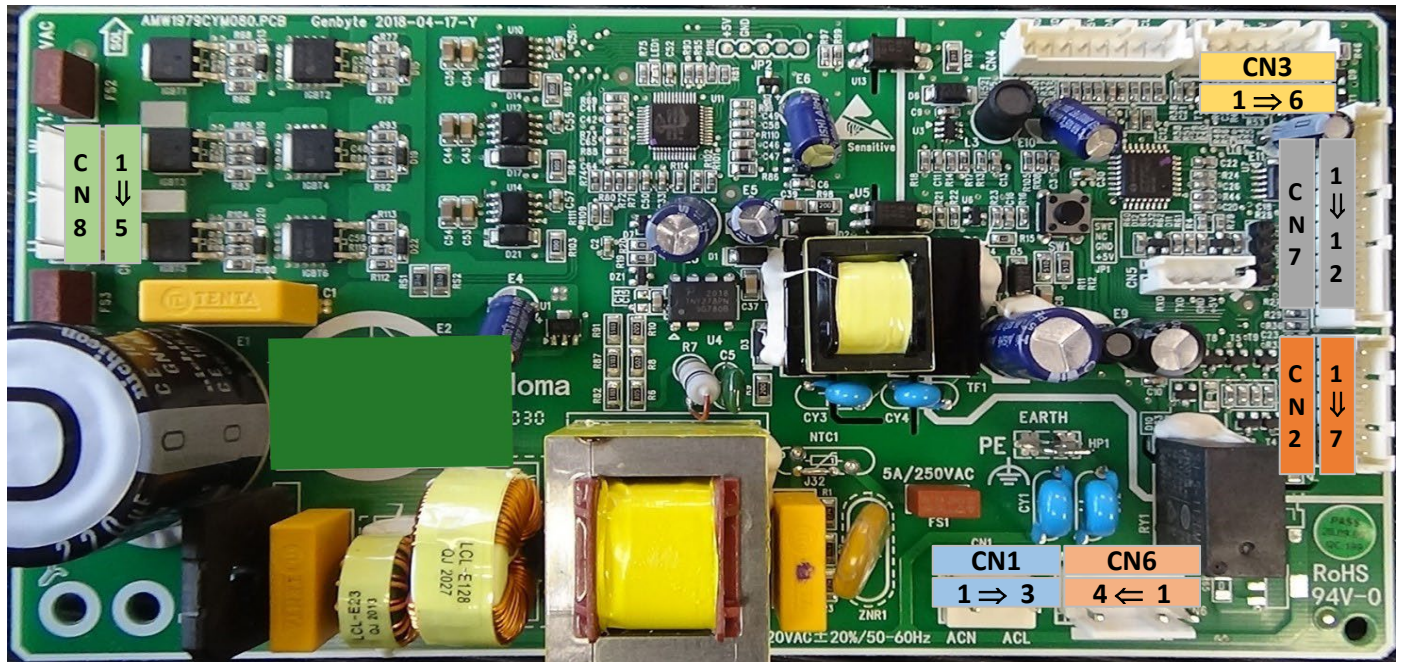
*La solution assistance*



Códigos de error	Descripción
<b>E0</b>	Problema de comunicación entre pantalla/alimentación
<b>E1</b>	Avería sensor frigorífico
<b>E2</b>	Fallo del sensor del congelador
<b>E3</b>	Fallo sensor desescarche
<b>E4</b>	Avería sonda ambiente (En display)
<b>E5</b>	Falla calentador de descongelamiento o fusible

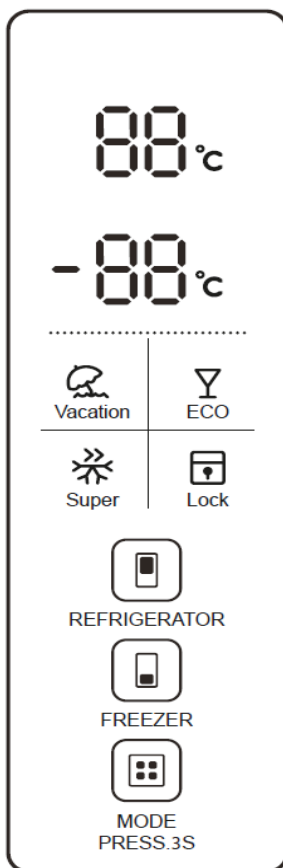
Valores de la sonda de temperatura							
T( )	R(kΩ)	T( )	R(kΩ)	T( )	R(kΩ)	T( )	R(kΩ)
-30	33.81	-18	16.90	2	5.87	8	4.37
-28	30.01	-16	15.15	3	5.59	10	3.97
-26	26.68	-10	10.92	4	5.32	15	3.14
-24	23.75	-5	8.39	5	5.06	20	2.50
-22	21.18	0	6.50	6	4.82	25	2.01
-20	18.90	1	6.18	7	4.59	30	1.62

*La solution assistance*



CN8	1	W	Compresor	CN7	1	+12V	-
	2	-	-		2	B-	-
	3	V	Compresor		3	A-	válvula
	4	-	-		4	B+	-
	5	U	Compresor		5	A+	-
CN3	1	GND	Interruptor de la puerta del congelador		6	GND	Interruptor de la puerta del refrigerador
	2	Door2			7	Door1	
	3	COMU	Pantalla + Sensor ambiental		8	+12V	Iluminación del refrigerador
	4	GND			9	Lci.led	
	5	+5V			Sonda nevera	10	GND
	6	+12V				11	LCTH
CN2	1	LDTH	Sonda de congelador		12	-	-
	2	GND	Sonda de desescarche	CN6	1	SL-H	-
	3	HSTH			2	FD-H	Resistencia al descongelamiento
	4	GND	3		-	-	
	5	PWM	Admirador		4	ACN	neutral
	6	FAN		CN1	1	ACN	Alimento
	7	GND			2	-	
		3	ACL				

*La solution assistance*

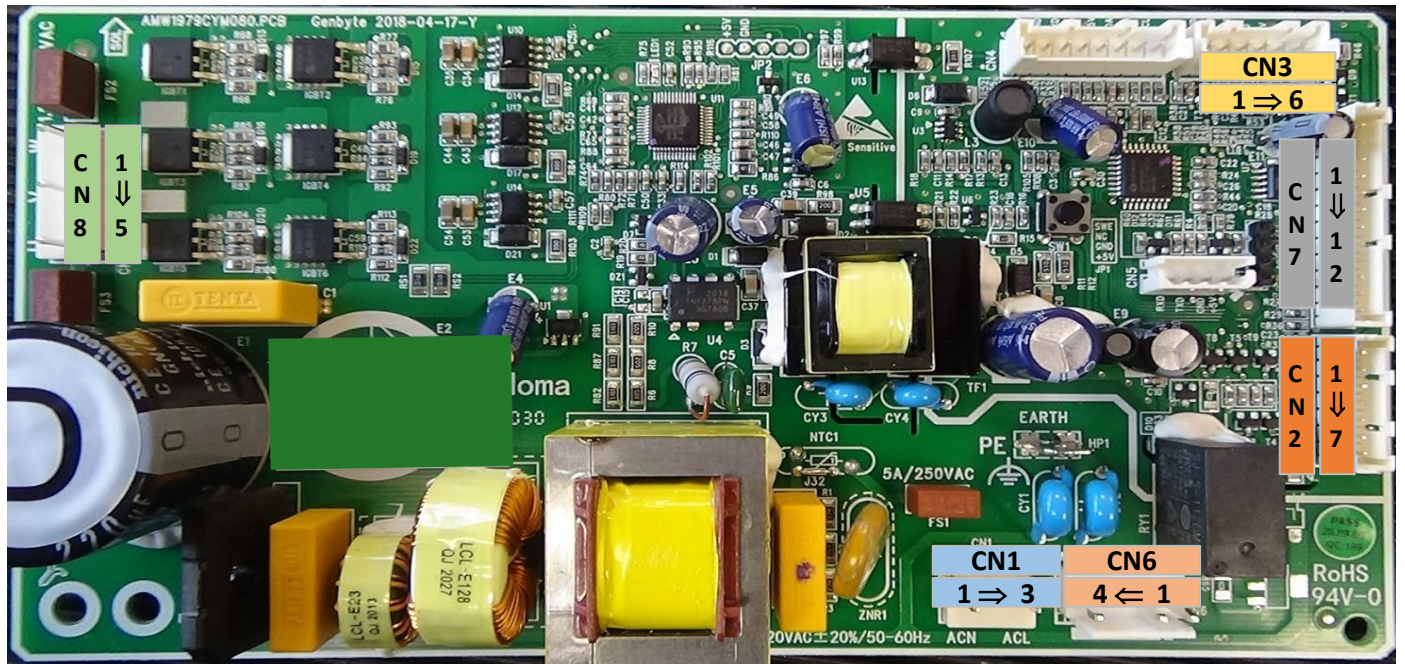


Códigos de erro	Descrição
<b>E0</b>	Problema de comunicação entre display/energia
<b>E1</b>	Falha no sensor do refrigerador
<b>E2</b>	Falha no sensor do congelador
<b>E3</b>	Falha no sensor de degelo
<b>E4</b>	Falha do sensor de ambiente (no visor)
<b>E5</b>	Aquecedor de descongelamento ou falha no fusível

Valores da sonda de temperatura							
T( )	R(kΩ)	T( )	R(kΩ)	T( )	R(kΩ)	T( )	R(kΩ)
-30	33.81	-18	16.90	2	5.87	8	4.37
-28	30.01	-16	15.15	3	5.59	10	3.97
-26	26.68	-10	10.92	4	5.32	15	3.14
-24	23.75	-5	8.39	5	5.06	20	2.50
-22	21.18	0	6.50	6	4.82	25	2.01
-20	18.90	1	6.18	7	4.59	30	1.62

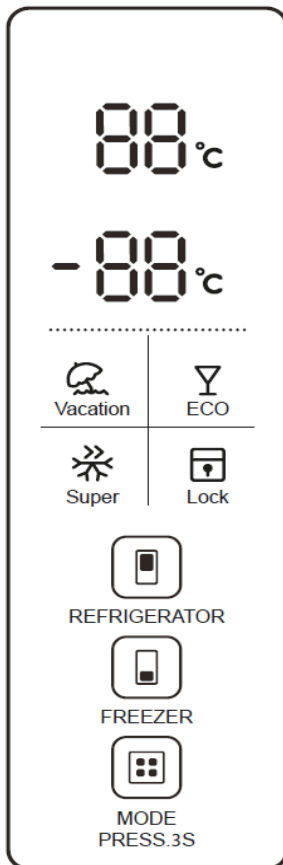
*La solution assistance*





CN8	1	W	Compressor	CN7	1	+12V	-
	2	-	-		2	B-	-
	3	V	Compressor		3	A-	válvula
	4	-	-		4	B+	-
	5	U	Compressor		5	A+	-
CN3	1	GND	interruptor da porta do freezer		6	GND	interruptor da porta da geladeira
	2	Door2	-		7	Door1	-
	3	COMU	-		8	+12V	Iluminação da geladeira
	4	GND	Tela + Sensor de ambiente		9	Lci.led	-
	5	+5V	-		10	GND	Sonda de geladeira
	6	+12V	-		11	LCTH	-
CN2	1	LDTH	Sonda do congelador		12	-	-
	2	GND	-	CN6	1	SL-H	-
	3	HSTH	Sonda de descongelamento		2	FD-H	Resistência ao degelo
	4	GND	-		3	-	-
	5	PWM	-		4	ACN	Neutro
	6	FAN	Fã	CN1	1	ACN	-
	7	GND	-		2	-	Alimentação
			3		ACL	-	

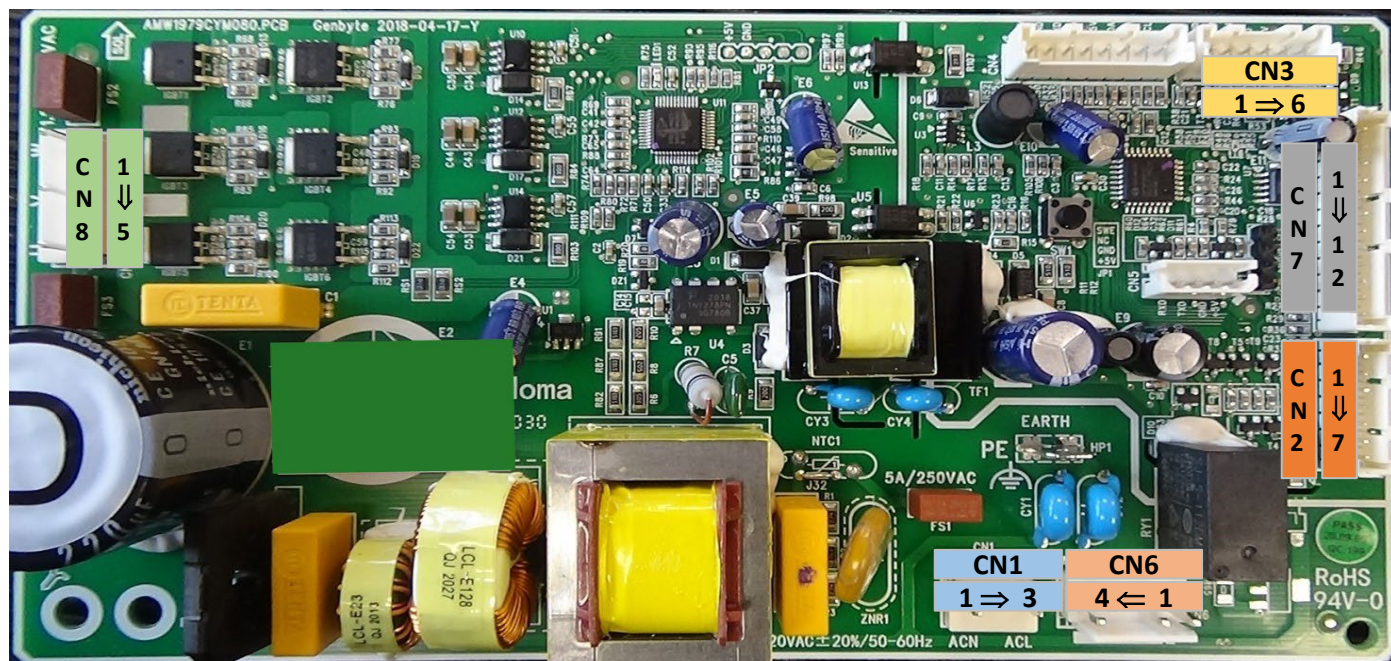
*La solution assistance*



Kody błędów	Opis
E0	Problem z komunikacją między wyświetlaczem / zasilaniem
E1	Usterka czujnika lodówki
E2	Usterka czujnika zamrażarki
E3	Błąd czujnika odszraniania
E 4	Błąd czujnika pokojowego (na wyświetlaczu)
E5	Usterka grzałki odszraniania lub bezpiecznika

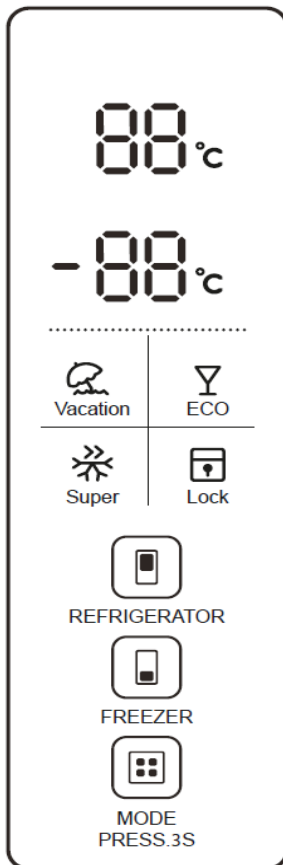
Wartości sondy temperatury							
T( )	R(kΩ)	T( )	R(kΩ)	T( )	R(kΩ)	T( )	R(kΩ)
-30	33.81	-18	16.90	2	5.87	8	4.37
-28	30.01	-16	15.15	3	5.59	10	3.97
-26	26.68	-10	10.92	4	5.32	15	3.14
-24	23.75	-5	8.39	5	5.06	20	2.50
-22	21.18	0	6.50	6	4.82	25	2.01
-20	18.90	1	6.18	7	4.59	30	1.62

*La solution assistance*



CN8	1	W	Kompresor	CN7	1	+12V	-
	2	-	-		2	B-	zawór
	3	V	Kompresor		3	A-	
	4	-	-		4	B+	
	5	U	Kompresor		5	A+	
CN3	1	GND	przełącznik drzwi zamrażarki		6	GND	
	2	Door2	Wyświetlacz + czujnik otoczenia		7	Door1	Oświetlenie lodówki
	3	COMU			8	+12V	
	4	GND			9	Lci.led	
	5	+5V			10	GND	Sonda do lodówki
	6	+12V			11	LCTH	-
CN2	1	LDTH			Sonda zamrażarki	12	-
	2	GND	Sonda odszraniania	CN6	1	SL-H	-
	3	HSTH			2	FD-H	Odporność na odszranianie
	4	GND	3		-	-	
	5	PWM	Miłośnik		4	ACN	Neutralny
	6	FAN	CN1	1	ACN	Karmić	
	7	GND		2	-		
		3		ACL			

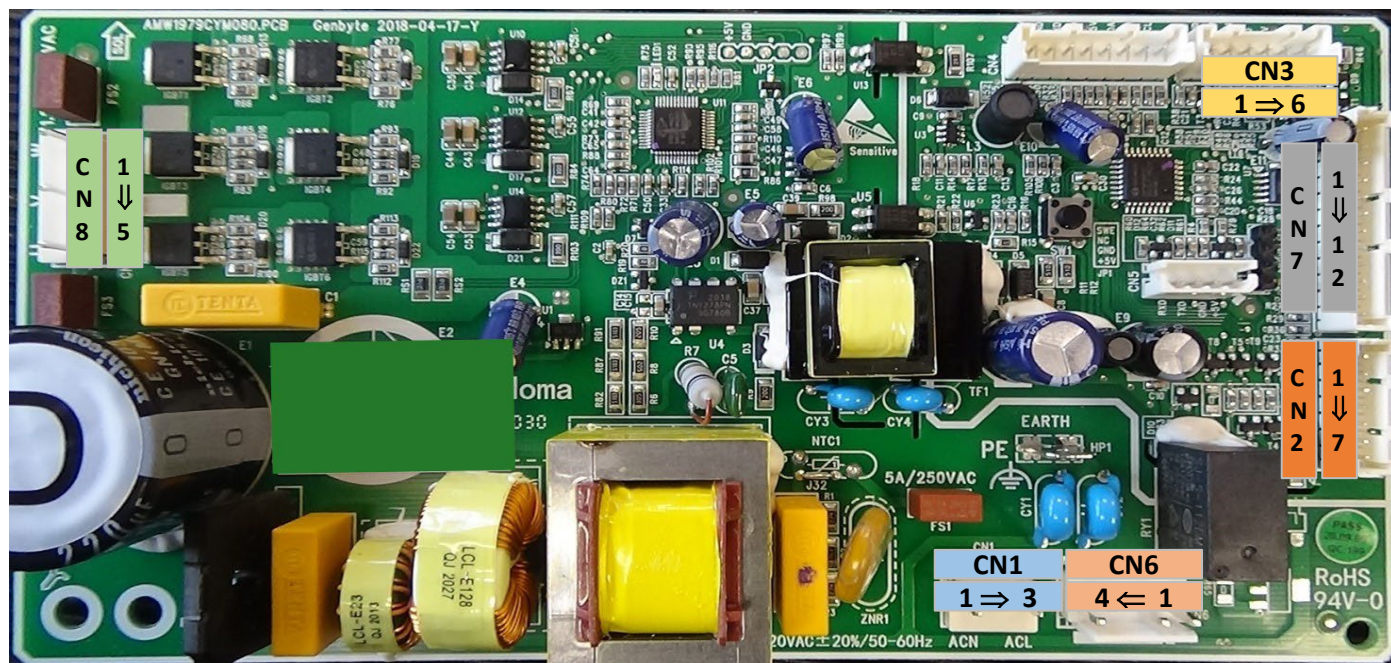
*La solution assistance*



Hibakódok	Leírás
E0	Kommunikációs probléma a kijelző / tápellátás között
E1	Hűtőszekrény érzékelő hiba
E2	Fagyasztó érzékelő hiba
E3	Leolvasztás érzékelő hibája
E4	Szobaérzékelő hibája (a kijelzőn)
E5	Leolvasztó fűtés vagy biztosíték hiba

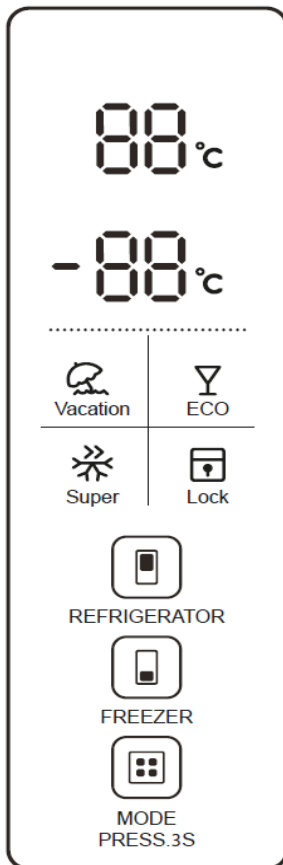
Hőmérséklet-szonda értékek							
T( )	R(kΩ)	T( )	R(kΩ)	T( )	R(kΩ)	T( )	R(kΩ)
-30	33.81	-18	16.90	2	5.87	8	4.37
-28	30.01	-16	15.15	3	5.59	10	3.97
-26	26.68	-10	10.92	4	5.32	15	3.14
-24	23.75	-5	8.39	5	5.06	20	2.50
-22	21.18	0	6.50	6	4.82	25	2.01
-20	18.90	1	6.18	7	4.59	30	1.62

*La solution assistance*



CN8	1	W	Kompresszor	CN7	1	+12V	-
	2	-	-		2	B-	-
	3	V	Kompresszor		3	A-	szelep
	4	-	-		4	B+	-
	5	U	Kompresszor		5	A+	-
CN3	1	GND	fagyasztóajtó kapcsoló		6	GND	hűtőajtó kapcsoló
	2	Door2	Kijelző + környezeti érzékelő		7	Door1	Hűtőszekrény világítás
	3	COMU			8	+12V	
	4	GND			9	Lci.led	
	5	+5V			10	GND	Hűtőszonda
	6	+12V			11	LCTH	
CN2	1	LDTH			Fagyasztó szonda	12	-
	2	GND	Leolvasztó szonda	CN6	1	SL-H	-
	3	HSTH			2	FD-H	Leolvasztási ellenállás
	4	GND	3		-	-	
	5	PWM	Ventilátor		4	ACN	Semleges
	6	FAN		CN1	1	ACN	Takarmány
	7	GND			2	-	
		3	ACL				

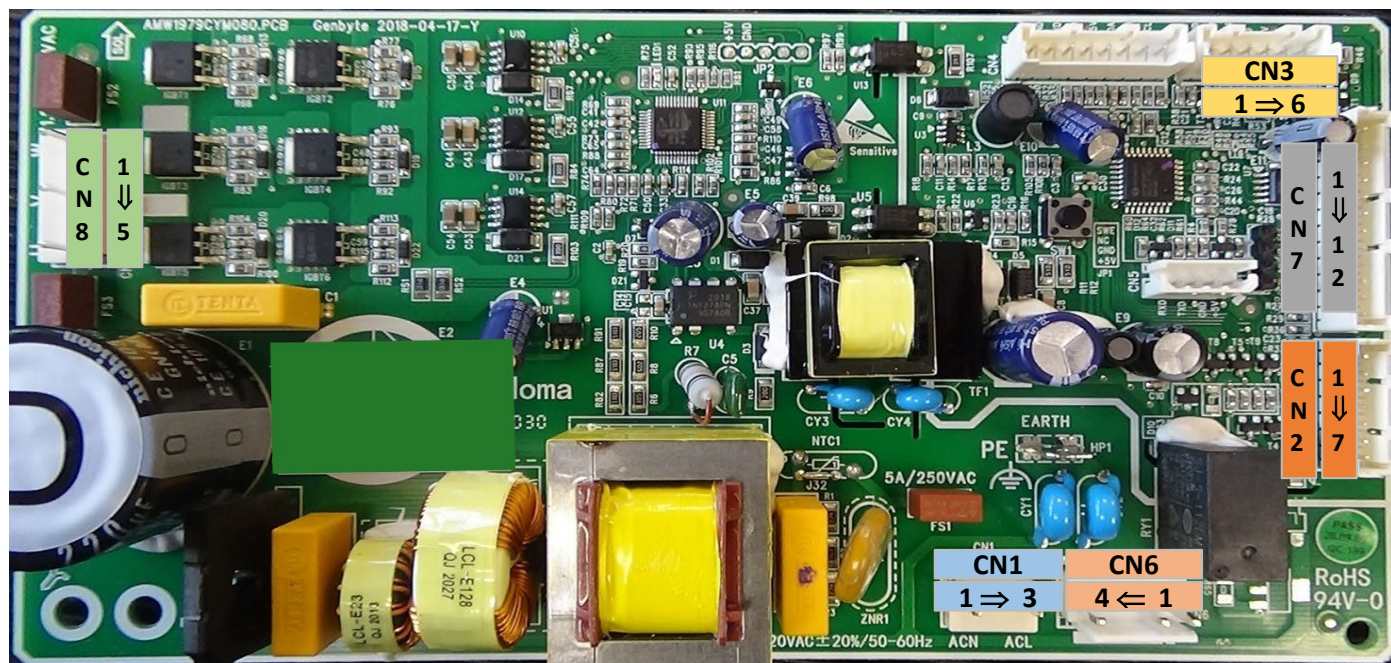
*La solution assistance*



Coduri de	Descriere
<b>E0</b>	Problemă de comunicare între afișaj/alimentare
<b>E1</b>	Defecțiune la senzorul frigiderului
<b>E2</b>	Eroare la senzorul congelatorului
<b>E3</b>	Eroare la senzorul de dezghețare
<b>E4</b>	Eroare senzor de cameră (pe afișaj)
<b>E5</b>	Dezghețați încălzitorul sau siguranța defect

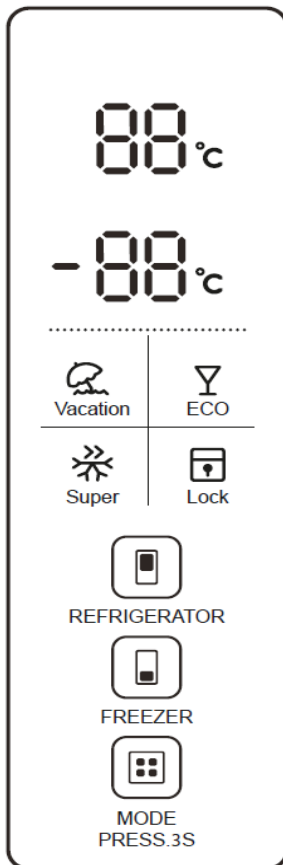
Valorile sondei de temperatură							
T( )	R(kΩ)	T( )	R(kΩ)	T( )	R(kΩ)	T( )	R(kΩ)
-30	33.81	-18	16.90	2	5.87	8	4.37
-28	30.01	-16	15.15	3	5.59	10	3.97
-26	26.68	-10	10.92	4	5.32	15	3.14
-24	23.75	-5	8.39	5	5.06	20	2.50
-22	21.18	0	6.50	6	4.82	25	2.01
-20	18.90	1	6.18	7	4.59	30	1.62

*La solution assistance*



CN8	1	W	Compresor	CN7	1	+12V	-
	2	-	-		2	B-	-
	3	V	Compresor		3	A-	supapă
	4	-	-		4	B+	-
	5	U	Compresor		5	A+	-
CN3	1	GND	înterupătorul uşii congelatorului		6	GND	înterupător uşă frigiderului
	2	Door2			7	Door1	
	3	COMU	Display + Senzor de mediu		8	+12V	Iluminarea frigiderului
	4	GND			9	Lci.led	
	5	+5V			Sonda frigider	10	GND
	6	+12V				11	LCTH
CN2	1	LDTH	Sonda congelatorului		12	-	-
	2	GND	Sondă de dezgheţare	CN6	1	SL-H	-
	3	HSTH			2	FD-H	Rezistenta la dezgheţare
	4	GND	3		-	-	
	5	PWM	Ventilator		4	ACN	Neutru
	6	FAN		CN1	1	ACN	A hrani
	7	GND			2	-	
		3	ACL				

*La solution assistance*

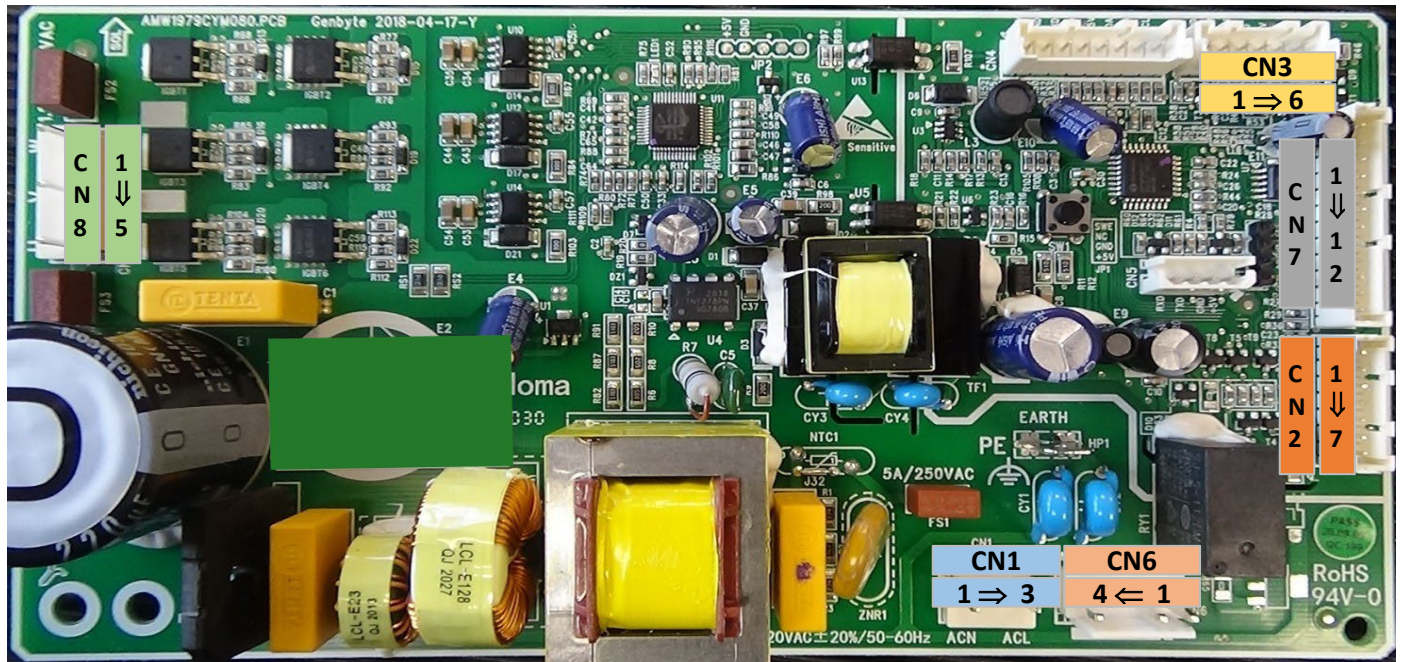


Fehlercode	Beschreibung
E0	Kommunikationsproblem zwischen Display / Stromversorgung
E1	Kühlschranksensorfehler
E2	Gefriersensorfehler
E3	Fehler des Abtausensors
E4	Raumfühlerfehler (auf dem Display)
E5	Abtauheizung oder Sicherungsfehler

Temperaturfühlerwerte							
T( )	R(kΩ)	T( )	R(kΩ)	T( )	R(kΩ)	T( )	R(kΩ)
-30	33.81	-18	16.90	2	5.87	8	4.37
-28	30.01	-16	15.15	3	5.59	10	3.97
-26	26.68	-10	10.92	4	5.32	15	3.14
-24	23.75	-5	8.39	5	5.06	20	2.50
-22	21.18	0	6.50	6	4.82	25	2.01
-20	18.90	1	6.18	7	4.59	30	1.62

*La solution assistance*





CN8	1	W	Kompressor	CN7	1	+12V	-
	2	-	-		2	B-	Ventil
	3	V	Kompressor		3	A-	
	4	-	-		4	B+	
	5	U	Kompressor		5	A+	
CN3	1	GND	Gefiertürschalter		6	GND	
	2	Door2			7	Door1	
	3	COMU	Display + Umgebungssensor		8	+12V	Kühlschrankbeleuchtung
	4	GND			9	Lci.led	
	5	+5V			Kühlschranksonde	10	GND
	6	+12V				11	LCTH
CN2	1	LDTH	Gefriersonde		12	-	-
	2	GND	Abtausonde	CN6	1	SL-H	-
	3	HSTH			2	FD-H	Abtaubeständigkeit
	4	GND	-		3	-	-
	5	PWM	Fan		4	ACN	Neutral
	6	FAN		CN1	1	ACN	Einspeisung
	7	GND			2	-	
		3	ACL				

*La solution assistance*